

LISN LED Product Catalogue

Company: SHENZHEN LISN LED CO.,LTD.

Phone: +86-135-0849-1114(Whatsapp)

Wechat: LISNLED

Sales E-mai: Alice@lisnled.com

Adress: Building B, Datang Times Commercial Complex, No. 2203, Meilong Avenue,
Longhua Street, Longhua District, Shenzhen

LISN LED is a professional LED display manufacturer and solution provider over 10 Years experience.

All LED display products with CE,RoHs,FCC approved.

LISN LED with a production and management area of 5,000 m, that provide 3 Years Warranty, 5% Spare Parts and 7/24 Hours Free Technical Support.

CERTIFICATE & FACTORY



72 Hours Aging Test



SMT Machine for Production

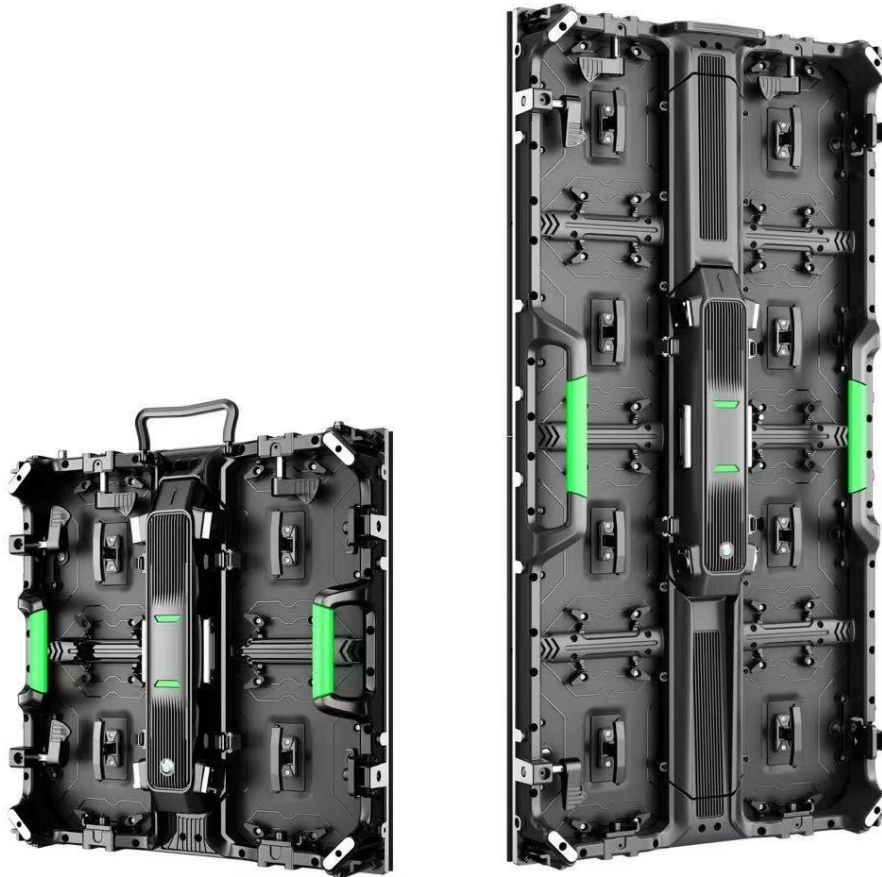


SMD LED Assembling Line



Rental Led Display

LISN-LRH500-1000 Series



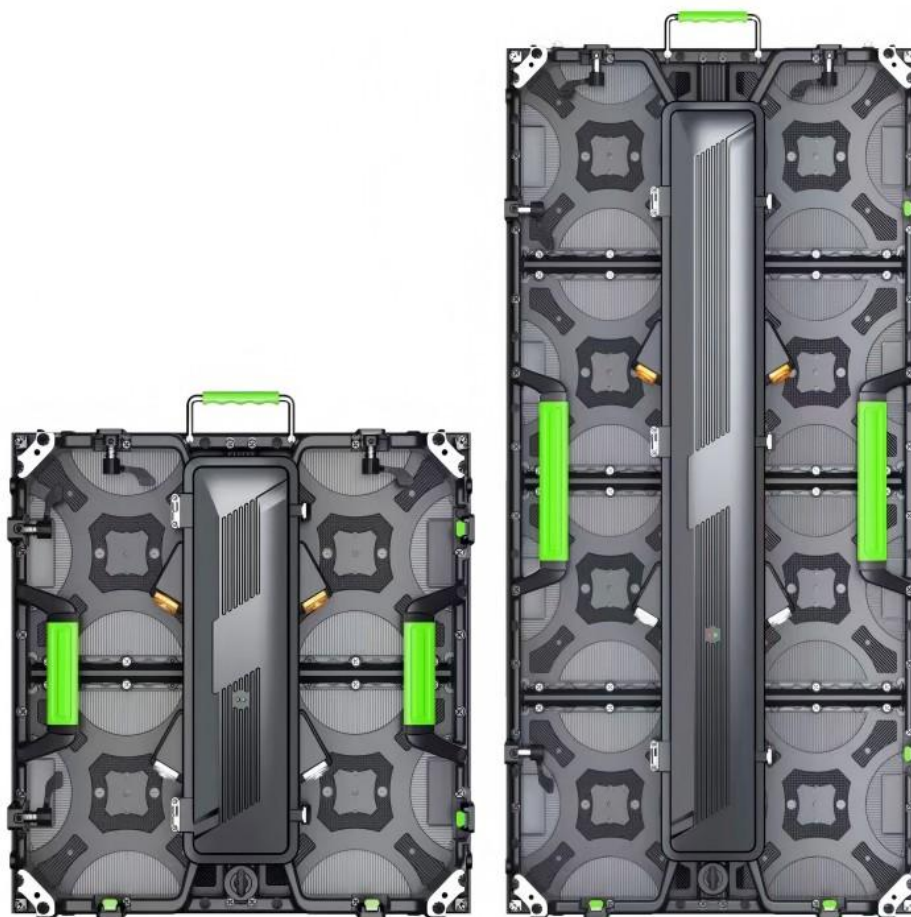
- Front & Back Dual Maintenance, and the module with lock design
- Normal installation, 90 degrees installation and curve installation.
- Detachable back over +Corner protector design, modules with handle, hard connection, high refresh rate, A5s plus receiving card

LISN-LRK500-1000 Series



- Hard connection, Horizontal and detachable back over
- Big modules size 250mmx500mm for easy assembling
- Die casting aluminum cabinets with corner protection, modules with handle, high refresh rate, A5s plus receiving card

LISN-LRN500-1000



- High-cost-effective
- Support Indoor Wall mounts to make Fixed installation
- GOB solution
- Normal installation or curve installation with curved lock

LISN-LRS500



- Supper flexible rental led display design
- Support 500mmx500mm die casting aluminum cabinet for creative stage requirement
- Normal installation or curve installation with flexible modules

Outdoor Fixed Led Display

LISN-LOM960 Series



- Standard size 960mmx960mm, suitable for 320mmx160mm or 320mmx320mm modules
- die casting aluminum cabinet with 28KG for each
- IP65 waterproof, High brightness 5500-6500nit
- Outdoor fixed installation or Rental solution

LISN-LOF960 Series



- Customized size for requirements
- Steel or Aluminum cabinet
- IP65 waterproof, High brightness 5500-6500nit

LISN-LOS960 Series



- 960mmx960mm standard size
- Aluminum flat cabinet or 45 degrees cutting cabinet
- IP65 waterproof, High brightness 5500-6500nit
- Energy Saving for flat big screen or 3D led display

LISN-LOS500-1000 Series



- 500mmx500mm or 500mmx1000mm standard size
- Die casting aluminum cabinet
- Indoor or Outdoor fixed installation
- Front & Back Dual Maintenance for wall mounted installation

Indoor Fixed Led Display

LISN-LI480 Series



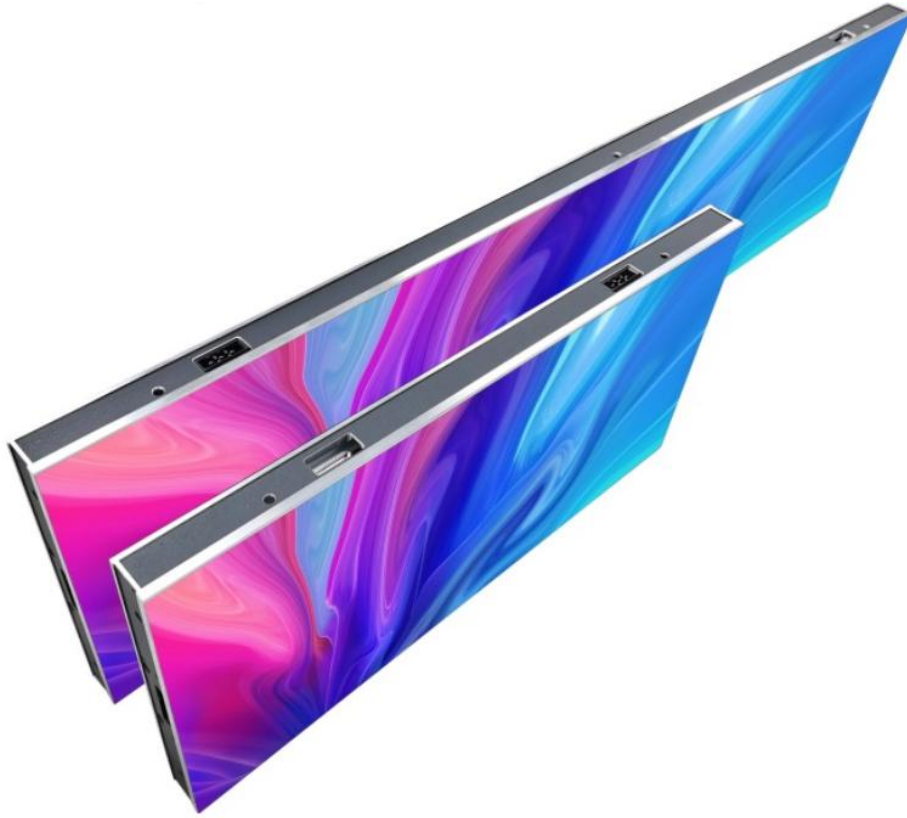
- 480mmx480mm standard size
- Die casting aluminum cabinet can be 45 degrees cutting
- Indoor fixed and wall mounted installation

LISN-LI640 Series



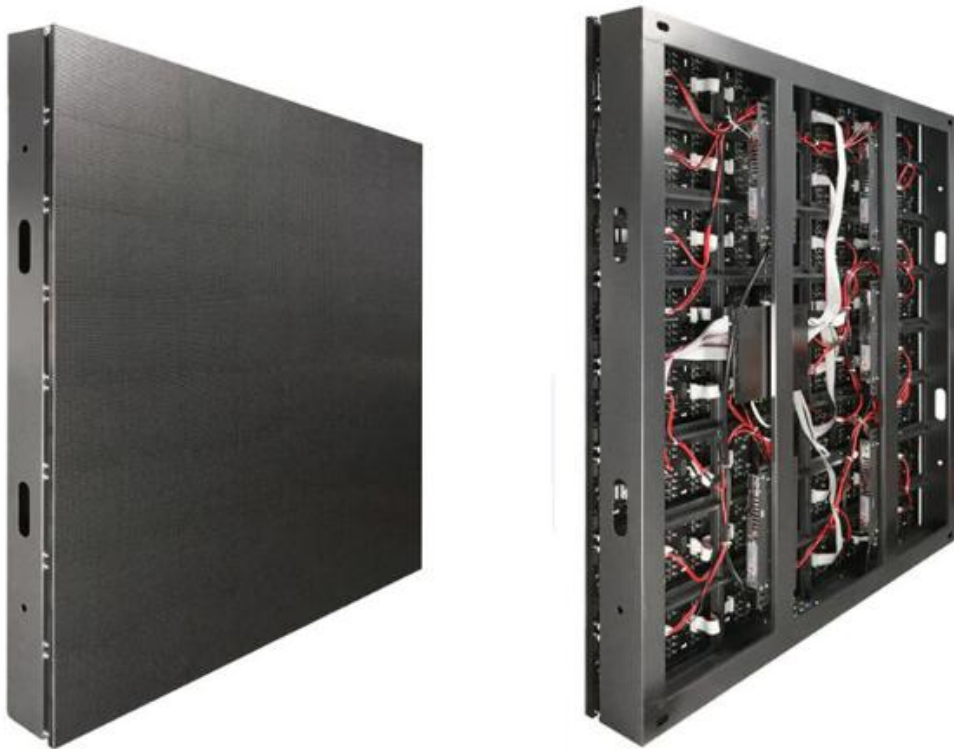
- 640mmx480mm standard size
- Die casting aluminum cabinet inner connection
- Indoor fixed and wall mounted installation

LISN-LI250 Series



- 1000mmx250mm, 750mmx250mm size
- Die casting aluminum cabinet inner connection
- Supper slim
- Indoor fixed and wall mounted installation

LISN-LI250 Series



- Customized size basing on requirements
- Steel or aluminum cabinet
- Cabinet without back door
- Indoor fixed and wall mounted installation

LED Poster Display Screen

LISN-LD640 Series



- 640mmx1920mm size, front service, removable
- formed with 640mmx480mm die casting aluminum cabinets
- WIFI,4G, Lan Cable control
- Cabinet with base and wheels

LISN-LS640 Series



- Steel cabinets, 640mmx1920mm size
- Mirror effect with PC Cover
- WIFI,4G, Lan Cable control
- Cabinet with base and wheels

Transparent Poster LED



- Transparent led screen 75% transparency
- Aluminum structure, 1000mmx2000mm size
- Cabinet with hanging bar or wheels
- WIFI,4G, Lan Cable control

Creative LED Display

Flexible LED Display



- Customized size with soft flexible led modules
- Steel structure with magnets
- Curved shape with customers' requirements
- Indoor and outdoor fixed installation

Sports LED Display LS960



- Standard size 960mmx960mm
- Die casting aluminum cabinets with stand support
- Cabinet with removable soft pillow and foldable stand
- Modules with soft mask

Sports LED Display LS1280



- Standard size 1280mmx960mm
- Die casting aluminum cabinets with stand support
- Cabinet with removable soft pillow and foldable stand
- Modules with soft mask

Cube LED Display



- Customized size basing on customers' requirements
- Steel structure
- base support or hanging solution
- Modules 45 degrees cutting and with magnets

Spherical LED Display



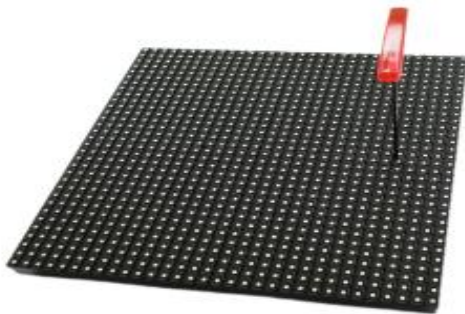
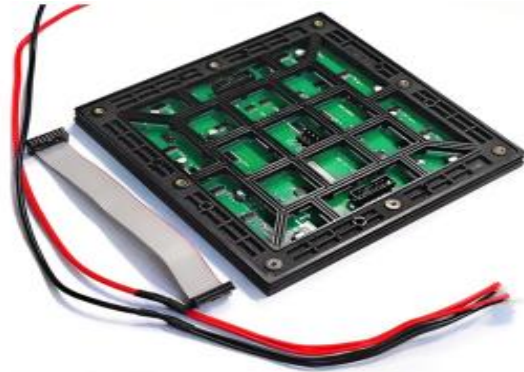
- Customized size basing on customers' requirements
- Steel structure
- base support or hanging solution
- Flexible Modules with customized size

Floor LED Display



- 500mmx1000mm size
- Steel cabinet with PC
- Cabinet with legs support
- Super load-bearing, floor interactive

LED Modules

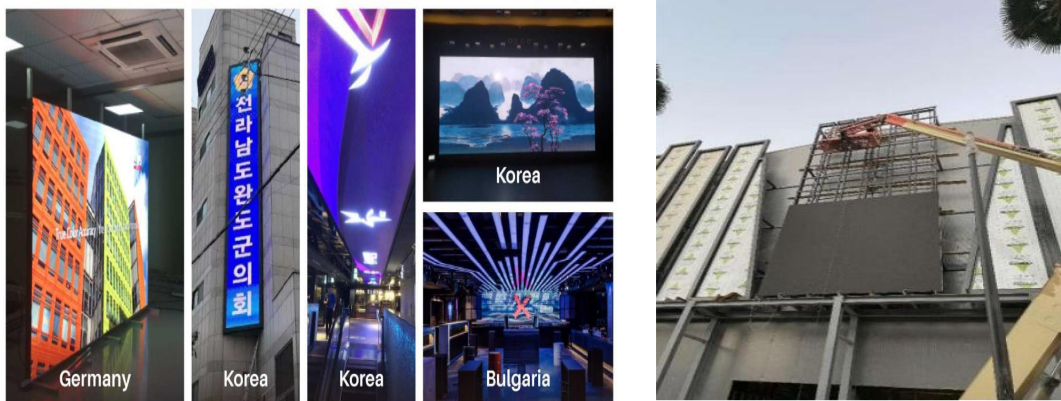
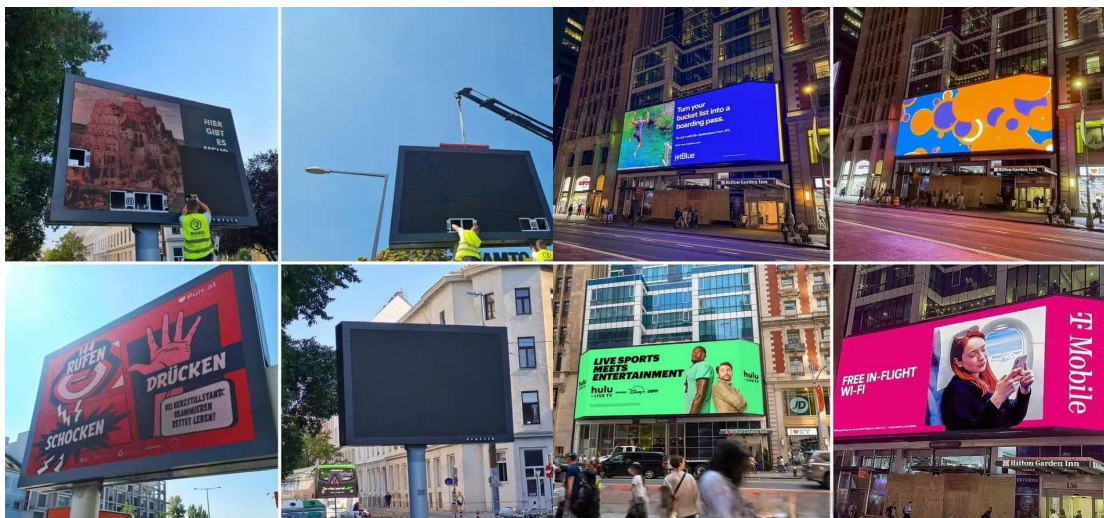
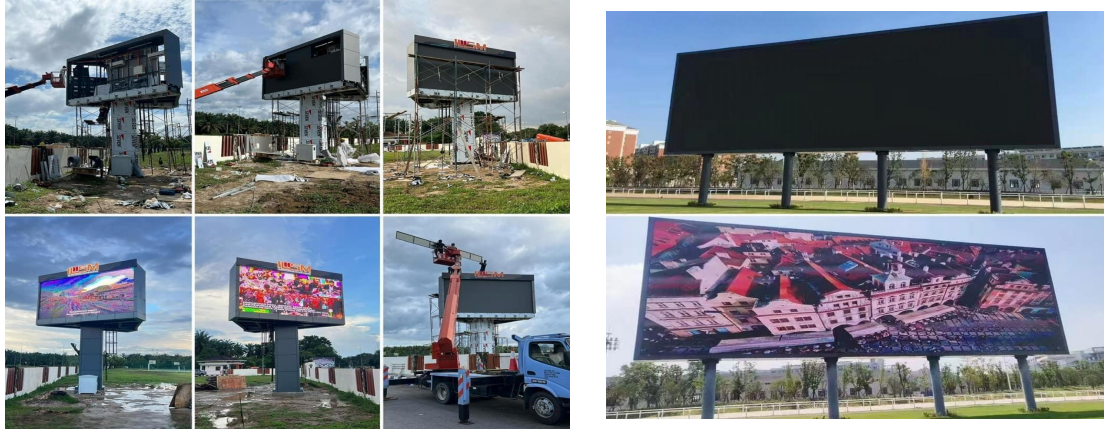


- All the modules use real material
- 72 hours testing
- Delivery time 3-7days

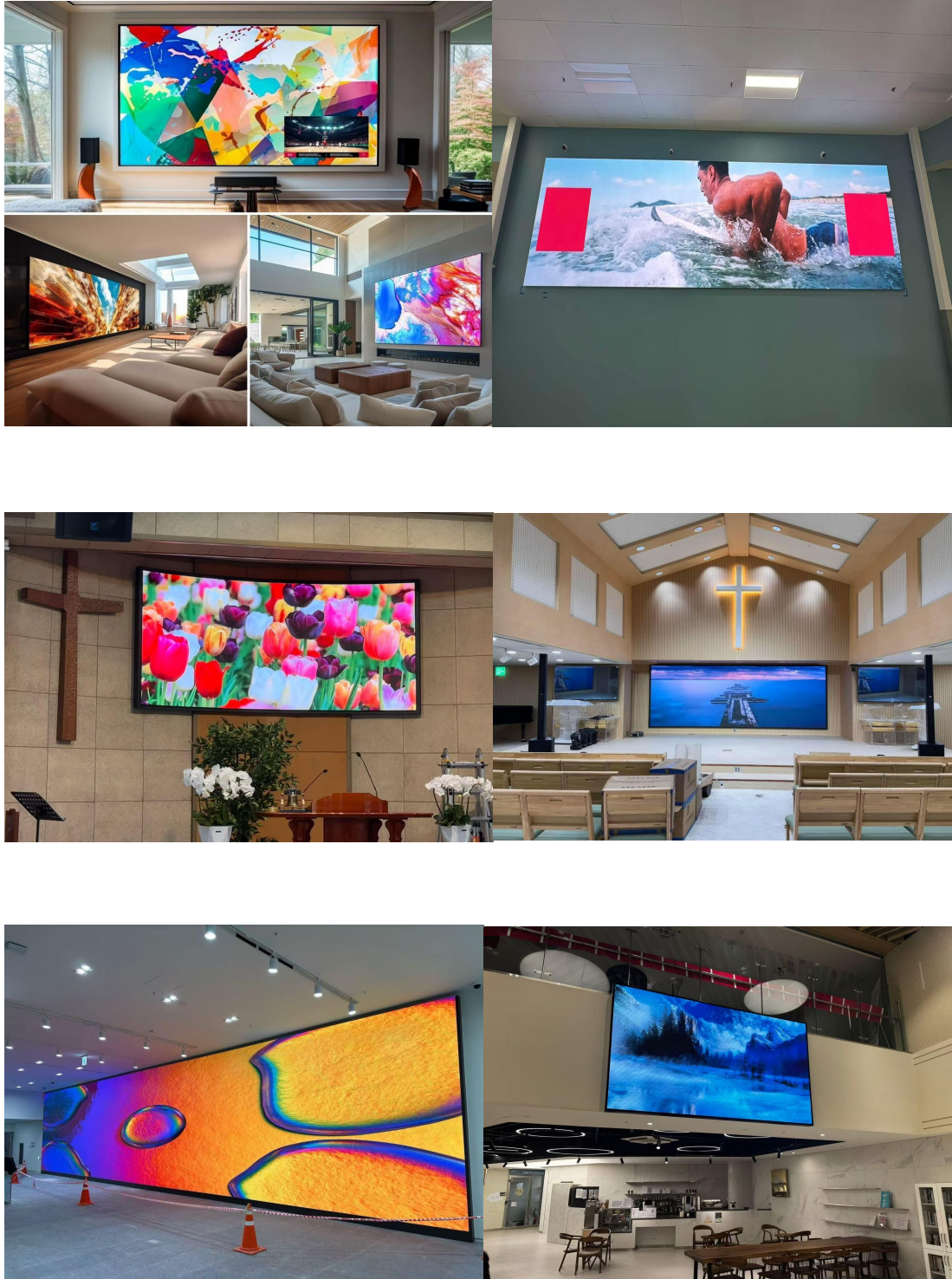
Recent Cases

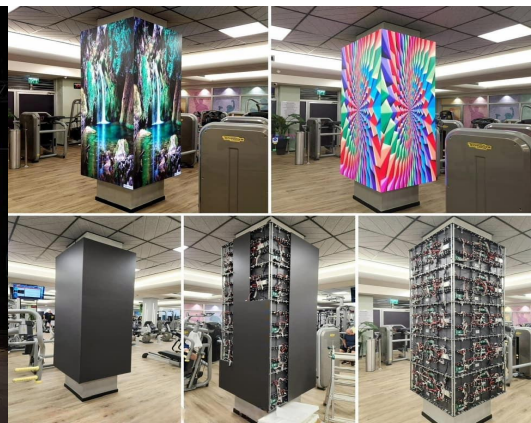
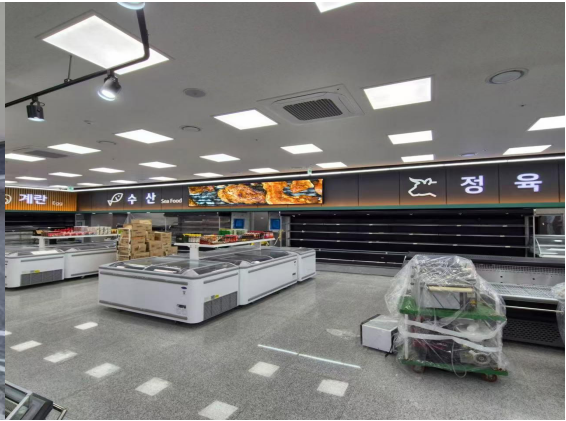
Outdoor installation:



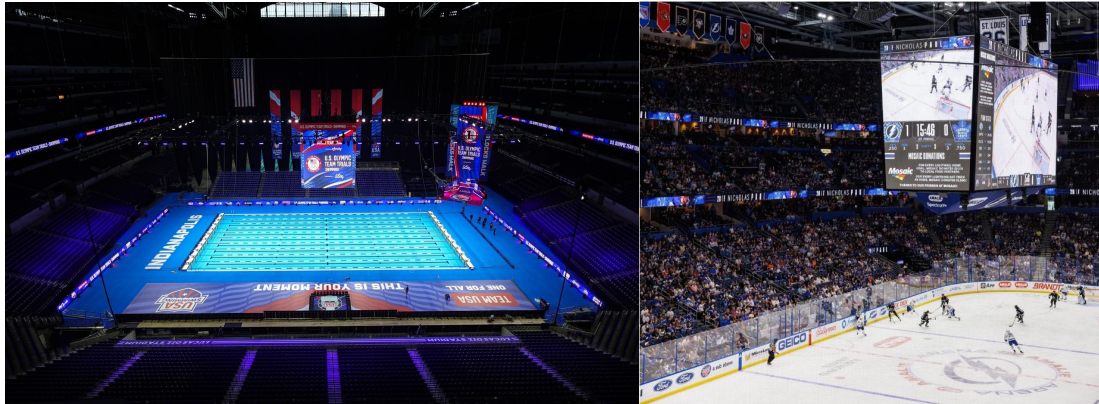


Indoor installation:

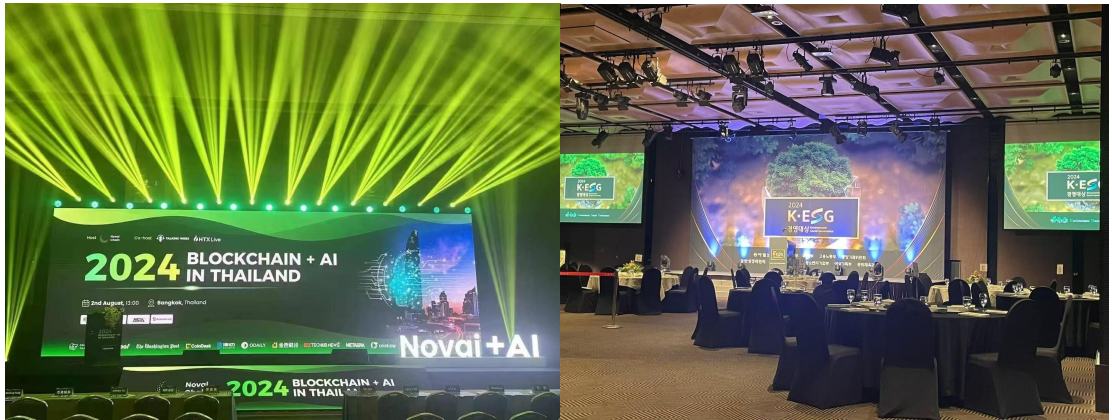


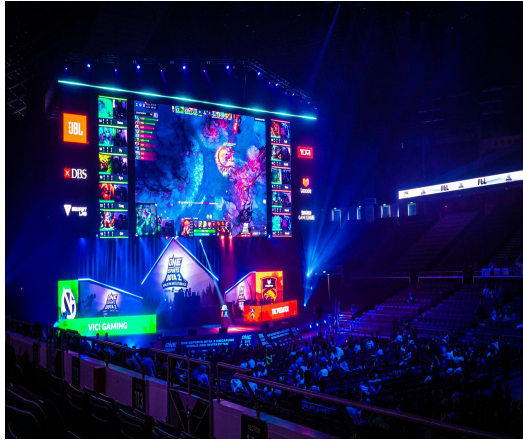


Sports Solution:



Rental solutions:





Transparent Cases:

